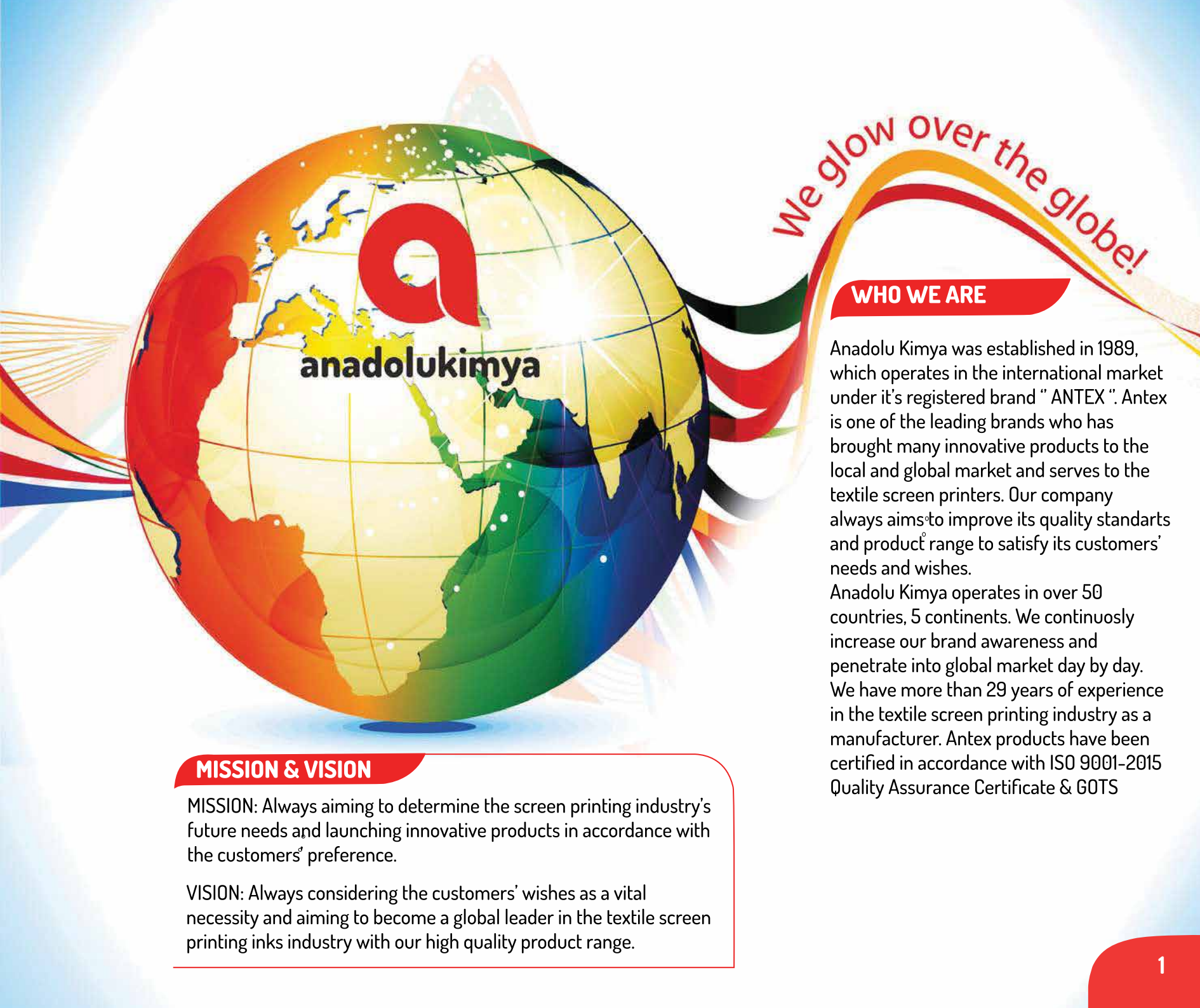


antex®



WHO WE ARE

Anadolu Kimya was established in 1989, which operates in the international market under its registered brand " ANTEX ". Antex is one of the leading brands who has brought many innovative products to the local and global market and serves to the textile screen printers. Our company always aims to improve its quality standards and product range to satisfy its customers' needs and wishes.

Anadolu Kimya operates in over 50 countries, 5 continents. We continuously increase our brand awareness and penetrate into global market day by day. We have more than 29 years of experience in the textile screen printing industry as a manufacturer. Antex products have been certified in accordance with ISO 9001-2015 Quality Assurance Certificate & GOTS

MISSION & VISION

MISSION: Always aiming to determine the screen printing industry's future needs and launching innovative products in accordance with the customers' preference.

VISION: Always considering the customers' wishes as a vital necessity and aiming to become a global leader in the textile screen printing inks industry with our high quality product range.

*Naturality is
in our essence!*



antex[®]



PRODUCTS

Water Based Products

Elastic Whites
Elastic Clear Bases
Printing Bases
Discharge Bases
Rotary Printing
Pigment Dispersions
Crosslinkers
Regulators

Water Based Special Effects

Foil Adhesive
Flock Adhesive
Glitter Adhesive
Gilding Base
Shimmer Effect
Cracking Effect
Pearl Base
Puff Base
Anti Migration
Foil Resist Base

Plastisol Based Products

Whites
Quick Flash
Low Bleed White
Clear Base
High Density
Anti Migration
Flock Adhesive
Puff Base
Matting Agent
Ready To Use Colors
Trichromatic Colors
Fluorescent Colors
Crosslinker
Regulators

antex[®]



R&D

Anadolu Kimya's R&D department develops to present quick and effective solutions to the customers' need with its experts in their relative fields.

Anadolu Kimya's R&D department doesn't aim to follow the sector but shape the sector's expectation itself with their extensive researches, scientific methods and the persistently obtained results.

To spread and ensure the recognition, reputation and reliability of the Antex brand across the globe, R&D department continuously develops itself and canalises its work in this cause.



TECHNICAL R&D

Technical R&D department's initial task is to take the end user's point of view in reference to test the new products or the products in development.

Testing the equivalent competitor products that are manufactured in local or international circumference in an objective perspective and consequently sharing the results of these tests with the R&D and Sales Units.

Making introductions and presentations on the usage, storage and technical details of the goods in our product range.

To contribute to the strengthening of the organization's infrastructure by providing technical training to the staff involved in sales, preparing printed samples and swatch cards.

QUALITY CONTROL

Established to ensure effective supervision on the delivery of equal quality on each product to each customer, Quality Control department's tasks are as follow:

Starting from the raw material up until to the final product, number of tests are performed and saved to the database.

Each new batch of raw materials and finished goods are archived and monitored to see whether if any change is shown.

Thanks to all these efforts, Anadolu Kimya continues to be in a leading position in the industry on product quality.



GS 603 FINE MESH WHITE - WB

Elastic and soft touching white for photographic and heat transfer printings

TECHNICAL DATA

Apperance	White Paste
pH	7 - 7.5
Type pf Fabric	Cotton and Cotton - Polyester Blend Fabrics
Screen	77 cm/ 195 inch Mesh 48 micron Silk - 120 cm/305 inch Mesh 34 micron Silk
Squeegee	67 Shore V Type
Curing	160 °C/320 F - 1.5 minutes
Washing	60 °C/140 F - 1200 rpm - 5 Washes
Cleaning of Screen	Water and Sponge

PS 07 SUPER ELASTIC WHITE - WB

Elastic and soft touching white with high washing fastness

TECHNICAL DATA

Apperance	White Paste
pH	7 - 7.5
Type pf Fabric	Cotton and Cotton - Polyester Blend Fabrics
Screen	43 cm/110 inch Mesh 70 micron Silk - 90 cm/230 inch Mesh 64 micron Silk
Squeegee	55-57 Shore U Type
Curing	160 °C/320 F - 1.5 minutes
Washing	60 °C/140 F - 1200 rpm - 10 Washes
Cleaning of Screen	Water and Sponge

SP 240 SNOW WHITE - WB

Elastic and soft touching white with excellent coverage

TECHNICAL DATA

Apperance	White Paste
pH	7 - 7.5
Type pf Fabric	Cotton and Cotton - Polyester Blend Fabrics
Screen	43 cm/ 110 inch Mesh 70 micron Silk - 55 cm/140 inch Mesh 64 micron Silk
Squeegee	55-57 Shore U Type
Curing	160 °C/320 F - 1.5 minutes
Washing	60 °C/140 F - 1200 rpm - 5 Washes
Cleaning of Screen	Water and Sponge



AC 1040 WHITE - WB

Elastic and soft touching acrylic based white

TECHNICAL DATA

Apperance	White Paste
pH	7-7.5
Type pf Fabric	Cotton and Cotton - Polyester Blend Fabrics
Screen	43 cm/110 inch Mesh 70 micron Silk - 77 cm/195 inch Mesh 48 micron Silk
Squeegee	55-57 Shore U Type
Curing	160 °C/320 F - 1.5 minutes
Washing	60 °C/140 F - 1200 rpm - 5 Washings
Cleaning of Screen	Water and Sponge

XP 50 WHITE - WB

Elastic and soft touching white with high working performance

TECHNICAL DATA

Apperance	White Paste
pH	7 - 7.5
Type pf Fabric	Cotton and Cotton - Polyester Blend Fabrics
Screen	43 cm/ 110 inch Mesh 70 micron Silk - 55 cm/140 inch Mesh 64 micron Silk
Squeegee	55-57 Shore U Type
Curing	160 °C/320 F - 1.5 minutes
Washing	60 °C/140 F - 1200 rpm - 5 Washes
Cleaning of Screen	Water and Sponge



WATER BASED
ELASTIC WHITES



GS 601 FINE MESH CLEAR BASE - WB

Elastic and soft touching clear base for photographic and heat transfer printings

TECHNICAL DATA

Apperance	Clear Base
pH	7 - 7.5
Type pf Fabric	White and Light Colored Cotton and Cotton Polyester Blend Fabrics
Screen	77 cm/ 195 inch Mesh 48 micron Silk - 120 cm/305 inch Mesh 34 micron Silk
Squeegee	67 Shore V Type
Curing	160 °C/320 F - 1.5 minutes
Washing	60 °C/140 F - 1200 rpm - 5 Washes
Cleaning of Screen	Water and Sponge

SP 220 CLEAR BASE - WB

Vivid colors with elastic and soft touching effect

TECHNICAL DATA

Apperance	Clear Base
pH	6.5 -7
Type pf Fabric	White and Light Colored Cotton and Cotton Polyester Blend Fabrics
Screen	43 cm/ 110 inch Mesh 70 micron Silk - 90 cm/230 inch Mesh 40 micron Silk
Squeegee	57-62 Shore U Type
Curing	160 °C/320 F - 1.5 minutes
Washing	60 °C/140 F - 1200 rpm - 5 Washes
Cleaning of Screen	Water and Sponge

PS 05 MATT CLEAR BASE - WB

Elastic and soft touching clear base with high washing

TECHNICAL DATA

Apperance	Clear Paste
pH	7-7.5
Type pf Fabric	White and Light Colored Cotton and Cotton-Polyester Blend Fabrics
Screen	43 cm/110 inch Mesh 70 micron Silk - 77 cm/195 inch Mesh 48 micron Silk
Squeegee	57-62 Shore U Type
Curing	160 °C/320 F - 1.5 minutes
Washing	60 °C/140 F - 1200 rpm - 10 Washes
Cleaning of Screen	Water and Sponge

XP 30 CLEAR BASE - WB

Vivid colors with more elasticity and soft touching effect

TECHNICAL DATA

Apperance	Clear Base
pH	7-7.5
Type pf Fabric	White and Light Colored Cotton and Cotton Polyester Blend Fabrics
Screen	43 cm/ 110 inch Mesh 70 micron Silk - 90 cm/230 inch Mesh 40 micron Silk
Squeegee	57-62 Shore U Type
Curing	160 °C/320 F - 1.5 minutes
Washing	60 °C/140 F - 1200 rpm - 5 Washes
Cleaning of Screen	Water and Sponge

XP 35 MATT CLEAR BASE - WB

Matt surface with elastic and soft touching effect

TECHNICAL DATA

Apperance	Clear Base
pH	7-7.5
Type pf Fabric	White and Light Colored Cotton and Cotton Polyester Blend Fabrics
Screen	43 cm/ 110 inch Mesh 70 micron Silk - 55 cm/140 inch Mesh 64 micron Silk
Squeegee	57-62 Shore U Type
Curing	160 °C/320 F - 1.5 minutes
Washing	60 °C/140 F - 1200 rpm - 5 Washes
Cleaning of Screen	Water and Sponge

AC 1020 CLEAR BASE - WB

Elastic and soft touching acrylic based clear base

TECHNICAL DATA

Apperance	Clear Base
pH	7-7.5
Type pf Fabric	Cotton and Cotton-Polyester Blend Fabrics
Screen	43 cm/110 inch Mesh 70 micron Silk - 77 cm/195 inch Mesh 48 micron Silk
Squeegee	55-57 Shore U Type
Curing	160 °C/320 F - 1.5 minutes non-curing process within 24 hours by adding AC 1001(1%)
Washing	60 °C/140 F - 1200 rpm - 5 Washes
Cleaning of Screen	Water and Sponge

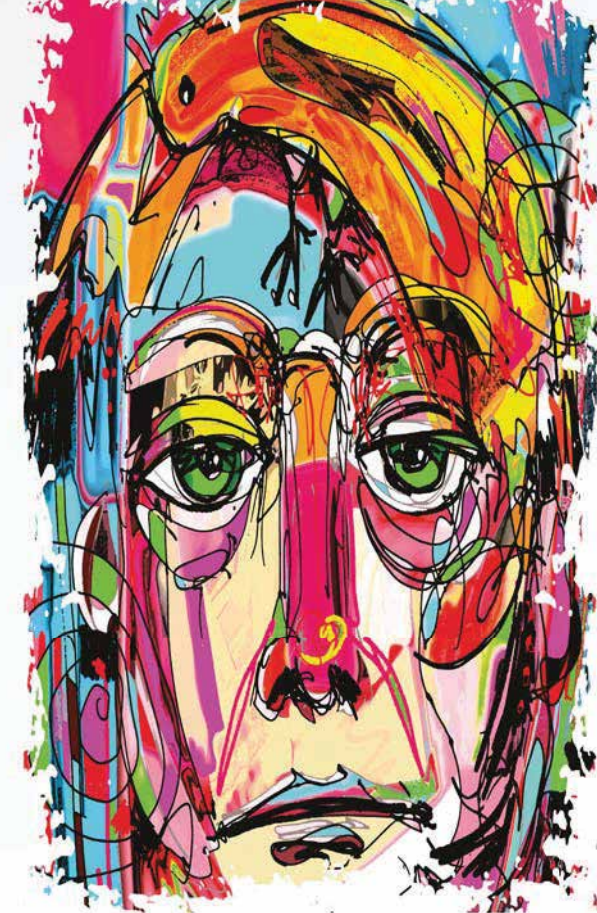
WATER BASED
ELASTIC CLEAR BASES

SP 215 SOFT PRINTING BASE - WB

Very soft touching effect for CMYK printing

TECHNICAL DATA

Apperance	Clear Base
pH	7-9
Type pf Fabric	White and Light Colored Cotton and Cotton- Polyester Blends
Screen	43 cm/ 110 inch Mesh 70 micron Silk - 120 cm/305 inch Mesh 40 micron Silk
Squeegee	57-62 Shore U Type
Curing	160 °C/320 F - 1.5 minutes
Washing	60 °C/140 F - 1200 rpm - 5 Washes
Cleaning of Screen	Water and Sponge



XP 10 PRINTING BASE - WB

Vivid colors and soft touching effect in both screen printing and continuous printing

TECHNICAL DATA

Apperance	Clear Base
pH	7-9
Type pf Fabric	White and Light Colored Cotton and Cotton- Polyester Blends
Screen	43 cm/ 110 inch Mesh 70 micron Silk - 77 cm/195 inch Mesh 40 micron Silk
Squeegee	57-62 Shore U Type
Curing	160 °C/320 F - 1.5 minutes
Washing	60 °C/140 F - 1200 rpm - 5 Washes
Cleaning of Screen	Water and Sponge



GS 635 ECOLOGICAL DISCHARGE BASE - WB

Vivid colors and soft touching effect with long working performance

TECHNICAL DATA

Apperance	Clear Base
pH	6.5-7.5
Type pf Fabric	100% Dischargeable Cotton
Screen	43 cm/ 110 inch Mesh 70 micron Silk
Squeegee	57-62 Shore U Type
Curing	160 °C/320 F - 2 minutes
Washing	60 °C/140 F - 1200 rpm - 5 Washes
Cleaning of Screen	Water and Sponge

GS 645 ECOLOGICAL DISCHARGE WHITE - WB

Excellent coverage and whiteness with soft touching effect and long working performance

TECHNICAL DATA

Apperance	White Paste
pH	6.5-7.5
Type pf Fabric	100% Dischargeable Cotton
Screen	43 cm/ 110 inch Mesh 70 micron Silk
Squeegee	57-62 Shore U Type
Curing	160 °C/320 F - 2 minutes
Washing	60 °C/140 F - 1200 rpm - 5 Washes
Cleaning of Screen	Water and Sponge

WATER BASED

PRINTING BASES

DISCHARGE BASES



SP 295 METALIC BASE - WB

Excellent brightness and fastness before and after washing for metallic powder applications

TECHNICAL DATA

Apperance	Clear Base
pH	7.5-8.5
Type pf Fabric	100% Cotton and Cotton Polyester Blend Fabrics
Screen	32 cm/ 80 inch Mesh 80 micron Silk - 43 cm/110 inch Mesh 70 micron Silk
Squeegee	57-62 Shore U Type
Curing	160 °C/320 F - 1.5 minutes
Washing	60 °C/140 F - 1200 rpm - 5 Washes
Cleaning of Screen	Water and Sponge

SP 234 GLITTER BASE - WB

Excellent brightness and fastness before and after washing for glitter applications

TECHNICAL DATA

Apperance	Clear Base
pH	7.5-8.5
Type pf Fabric	100% Cotton and Cotton- Polyester Blends
Screen	8 cm/ 20 inch Mesh 160 micron Silk - 12 cm/30 inch Mesh 150 micron Silk
Squeegee	67 Shore U Type
Curing	160 °C/320 F - 1.5 minutes
Washing	60 °C/140 F - 1200 rpm - 5 Washes
Cleaning of Screen	Water and Sponge



SP 236 FOIL ADHESIVE - WB

Maximum brightness and high washing fastness

TECHNICAL DATA

Apperance	Clear Base
pH	6.5-7
Type pf Fabric	100% Cotton, Cotton Polyester Blends and 100% Polyester
Screen	43 cm/ 110 inch Mesh 70 micron Silk
Squeegee	57-62 Shore U Type
Curing	160 °C/320 F - 1.5 minutes
Press	Hand Press: 160 °C - 4 Bars-15 Seconds Continuous Press: 160 C - 4 Bars-15-20 Seconds
Washing	40 °C/104 F - 1200 rpm - 5 Washings (Inside Out)
Cleaning of Screen	Water and Sponge

SP 260 PEARL BASE - WB

Elastic and soft touching pearl effect

TECHNICAL DATA

Apperance	Pearl Color Paste
pH	8-8.5
Type pf Fabric	100% Cotton and White and Light Colored Cotton Polyester Blend Fabrics
Screen	32 cm/ 80 inch Mesh 80 micron Silk - 43 cm/110 inch Mesh 70 micron Silk
Squeegee	57-62 Shore U Type
Curing	160 °C/320 F - 1.5 minutes
Washing	60 °C/140 F - 1200 rpm - 5 Washes
Cleaning of Screen	Water and Sponge

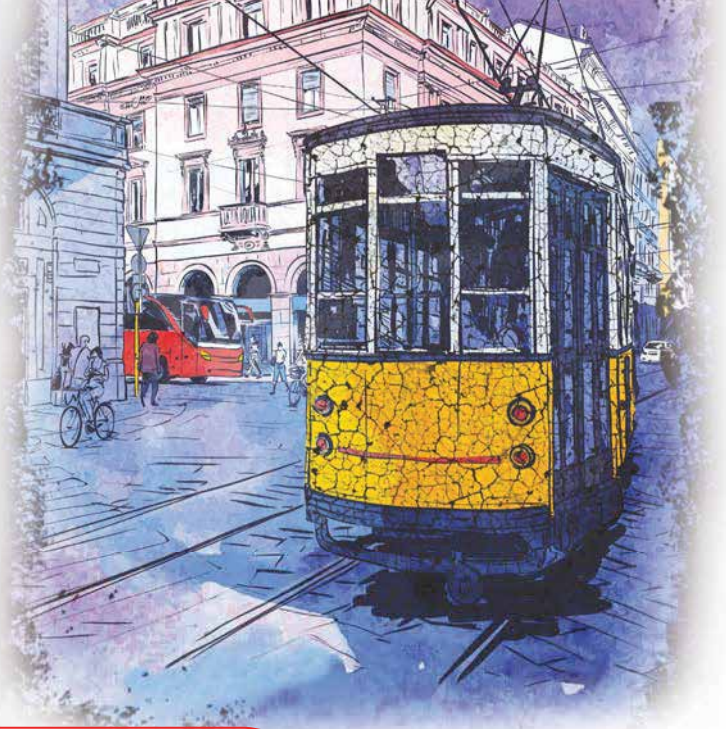
SP 216 ANTI-FOIL SOLUTION - WB

For anti foil applications

TECHNICAL DATA

Apperance	Clear Paste
pH	7-7.5
Type pf Fabric	White and Light Colored Cotton and Cotton-Polyester Blend Fabrics
Screen	43 cm/ 110 inch Mesh 70 micron Silk
Squeegee	57-62 Shore U Type
Curing	160 °C/320 F - 1.5 minutes
Washing	60 °C/140 F - 1200 rpm - 5 Washes
Cleaning of Screen	Water and Sponge

WATER BASED SPECIAL EFFECTS



SP 228 CRACKING CLEAR BASE - WB

The best vivid colors in cracking effect

TECHNICAL DATA

Apperance	Clear Base
pH	7.5-8
Type pf Fabric	White and Light Colored Cotton and Cotton- Polyester Blend Fabrics
Screen	32 cm/ 80 inch Mesh 80 micron Silk-43 cm/110 inch Mesh 70 micron Silk
Squeegee	67 Shore U Type
Curing	160 °C/320 F - 1.5 minutes
Washing	60 °C/140 F - 1200 rpm - 5 Washes
Cleaning of Screen	Water and Sponge

GS 617 BLACK - WB

Elastic and soft touching black base

TECHNICAL DATA

Apperance	Black Paste
pH	7-7.5
Type pf Fabric	White and Light Colored Cotton and Cotton-Polyester Blend Fabrics
Screen	43 cm/110 inch Mesh 70 micron Silk - 120 cm/305 inch Mesh 34 micron Silk
Squeegee	67 Shore V Type
Curing	160 °C/320 F - 1.5 minutes
Washing	60 °C/140 F - 1200 rpm - 5 Washes
Cleaning of Screen	Water and Sponge

SP 248 CRACKING WHITE - WB

The best white in cracking effect

TECHNICAL DATA

Apperance	White Paste
pH	7.5-8
Type pf Fabric	100%Cotton and White and Light Colored Cotton-Polyester Blend Fabrics
Screen	32 cm/ 80 inch Mesh 80 micron Silk-43 cm/110 inch Mesh 70 micron Silk
Squeegee	67 Shore U Type
Curing	160 °C/320 F - 1.5 minutes
Washing	60 °C/140 F - 1200 rpm - 5 Washes
Cleaning of Screen	Water and Sponge

AC 1060 PEARL BASE - WB

Elastic and soft touching pearl effect

TECHNICAL DATA

Apperance	Pearl Color Paste
pH	8-9
Type pf Fabric	100 %Cotton and White and Light Colored Cotton-Polyester Blend Fabrics
Screen	32 cm/80 inch Mesh 80 micron Silk - 43 cm/110 inch Mesh 70 micron Silk
Squeegee	57-62 Shore U Type
Curing	160 °C/320 F - 1.5 minutes
Washing	60 °C/140 F - 1200 rpm - 5 Washes
Cleaning of Screen	Water and Sponge

AC 1070 PEACH PUFF BASE - WB

Elastic and soft touching peach puff effect

TECHNICAL DATA

Apperance	Cream Color Paste
pH	8-9
Type pf Fabric	100% Cotton, Cotton- Polyester Blends and 100% Polyester
Screen	43 cm/110 inch Mesh 70 micron Silk
Squeegee	57-62 Shore U Type
Curing	160 °C/320 F - 1.5 minutes
Washing	60 °C/140 F - 1200 rpm - 5 Washes
Cleaning of Screen	Water and Sponge

AC 1080 SUEDE PUFF BASE - WB

Elastic and soft touching peach puff effect

TECHNICAL DATA

Apperance	Cream Color Paste
pH	8-9
Type pf Fabric	100% Cotton, Cotton- Polyester Blends and 100% Polyester
Screen	43 cm/110 inch Mesh 70 micron Silk
Squeegee	57-62 Shore U Type
Curing	160 °C/320 F - 1.5 minutes
Washing	60 °C/140 F - 1200 rpm - 5 Washes
Cleaning of Screen	Water and Sponge

SPECIAL EFFECTS



SP 280 SUEDE PUFF BASE - WB

Elastic and soft touching suede puff effect

TECHNICAL DATA

Apperance	Cream Color Paste
pH	7-7.5
Type pf Fabric	100% Cotton and White and Light Colored Cotton Polyester Blend Fabrics
Screen	32 cm/ 80 inch Mesh 80 micron Silk - 43 cm/110 inch Mesh 70 micron Silk
Squeegee	57-62 Shore U Type
Curing	160 °C/320 F - 1.5 minutes
Washing	60 °C/104 F - 1200 rpm - 5 Washes
Cleaning of Screen	Water and Sponge

SP 282 BLACK PUFF BASE - WB

Elastic and soft touching black puff effect

TECHNICAL DATA

Apperance	Black Paste
pH	7-7.5
Type pf Fabric	100% Cotton and White and Light Colored Cotton Polyester Blend Fabrics
Screen	32 cm/ 80 inch Mesh 80 micron Silk - 43 cm/110 inch Mesh 70 micron Silk
Squeegee	57-62 Shore U Type
Curing	160 °C/320 F - 1.5 minutes
Washing	60 °C/104 F - 1200 rpm - 5 Washes
Cleaning of Screen	Water and Sponge



SP 237 FLOCK ADHESIVE - WB

Excellent flock applications with high washing fastness

TECHNICAL DATA

Apperance	Clear Base
pH	8.5-9.5
Type pf Fabric	100% Cotton, Cotton- Polyester Blend and 100% Polyester
Screen	43 cm/ 110 inch Mesh 70 micron Silk
Squeegee	57-62 Shore U Type
Curing	160 °C/320 F - 3 minutes
Washing	40 °C/104 F - 1200 rpm - 5 Washes
Cleaning of Screen	Water and Sponge

SP 230 ANTI MIGRATION BASE - WB

To prevent dye migration on dark colored polyester and cotton polyester blend fabrics

TECHNICAL DATA

Apperance	Grey Paste
pH	8-8.5
Type pf Fabric	Dark Colored 100% Polyester and Cotton-Polyester Blends
Screen	32 cm/ 80 inch Mesh 80 micron Silk - 43 cm/110 inch Mesh 70 micron Silk
Squeegee	57-62 Shore U Type
Curing	160 °C/320 F - 1.5 minutes
Washing	60 °C/140 F - 1200 rpm - 5 Washes
Cleaning of Screen	Water and Sponge

XP 95 SILVER SHIMMER - WB

Soft touching ready to use silver shimmer effect

TECHNICAL DATA

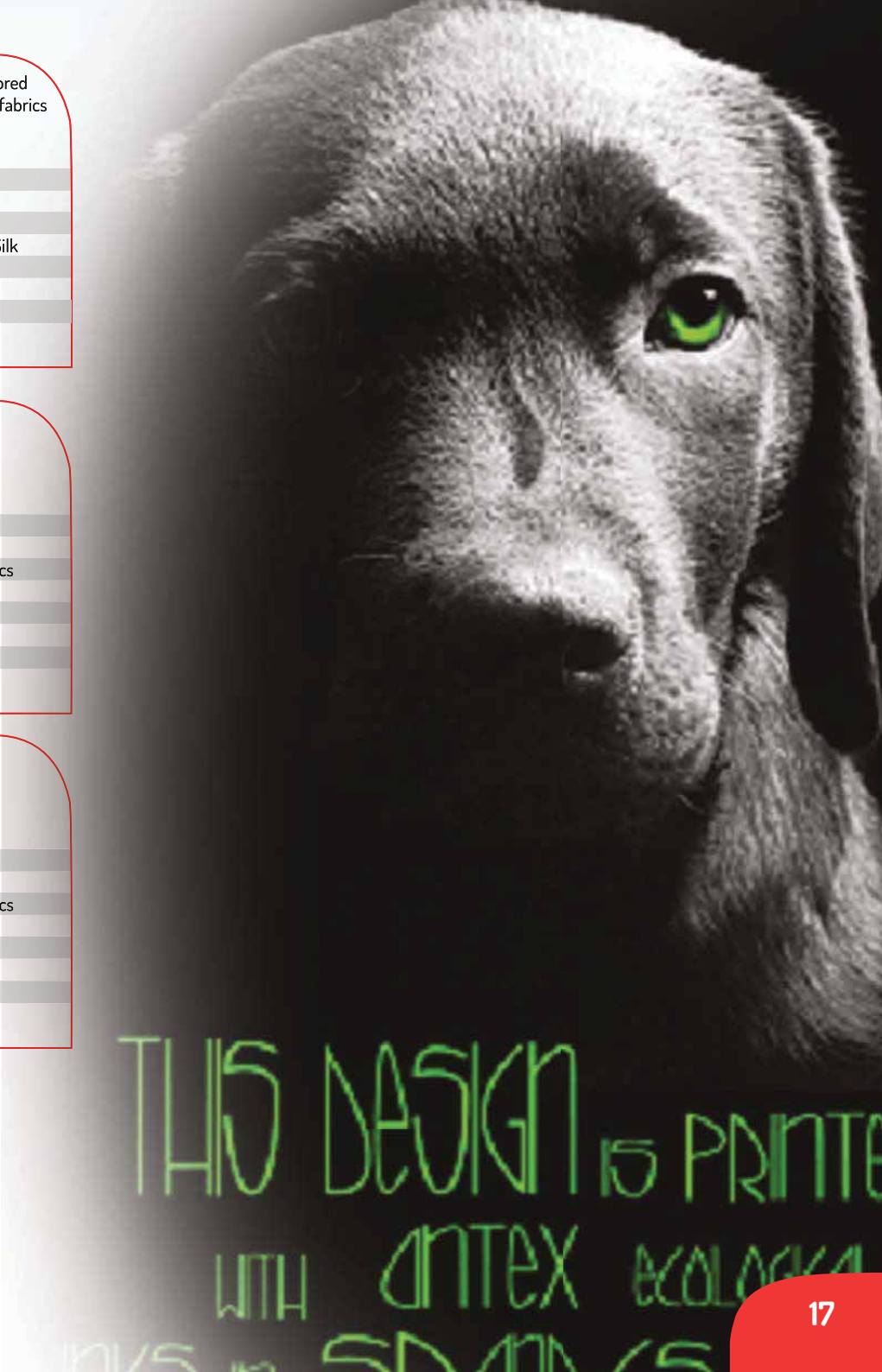
Apperance	Silver Paste
pH	8-8.5
Type pf Fabric	100 %Cotton and White and Light Colored Cotton-Polyester Blend Fabrics
Screen	32 cm/80 inch Mesh 80 micron Silk - 43 cm/110 inch Mesh 70 micron
SilkSqueegee	57-62 Shore U Type
Curing	160°C/320 F - 1.5 minutes
Washing	60 °C/140 F - 1200 rpm - 5 Washes
Cleaning of Screen	Water and Sponge

XP 96 GOLD SHIMMER - WB

Soft touching ready to use gold shimmer effect

TECHNICAL DATA

Apperance	Gold Paste
pH	8-8.5
Type pf Fabric	100 %Cotton and White and Light Colored Cotton-Polyester Blend Fabrics
Screen	32 cm/80 inch Mesh 80 micron Silk - 43 cm/110 inch Mesh 70 micron
SilkSqueegee	57-62 Shore U Type
Curing	160 °C/320 F - 1.5 minutes
Washing	60 °C/140 F - 1200 rpm - 5 Washes
Cleaning of Screen	Water and Sponge



SPECIAL EFFECTS

FA SERIES | PIGMENT DISPERSIONS

FA 3010

FA 3011

FA 3012

FA 3013

FA 3014

FA 3015

FA 3016

FA 3017

FA 3018

FA 3019

FA 3020

FA 3021

FR SERIES | FLUORESCENT PIGMENT DISPERSIONS

FR 410

FR 420

FR 430

FR 450

AZO & FORMALDEHYDE FREE
PIGMENT DISPERSIONS

ROTARY PRINTING - WATER BASED PIGMENT	
CP 2510	BLACK - WB
CP 2511	LEMON YELLOW - WB
CP 2512	GOLD YELLOW - WB
CP 2513	ORANGE - WB
CP 2514	RED - WB
CP 2515	CARMINE RED - WB
CP 2516	FUCHSIA - WB
CP 2517	GREEN - WB
CP 2518	BLUE - WB
CP 2519	NAVY BLUE - WB
CP 2520	VIOLET - WB
CP 2521	TURQUISE

ROTARY PRINTING - WATER BASED PRODUCTS	
CP 2002	COLD FIXING AGENT -WB
CP 2003	RETARDER - WB
CP 2004	CROSSLINKER - WB
CP 2005	DE-FOAMER-WB
CP 2006	SOFTENER - WB
CP 2008	WHITE PIGMENT - WB
CP 2009	REGULATOR - WB
CP 2010	CLEAR BASE - WB
CP 2015	OPAQUE PRINTING BASE - WB
CP 2020	WHITE - WB
CP 2040	FOIL ADHESIVE - WB
CP 2050	PEARL BASE - WB
CP 2060	SUEDE PUFF BASE - WB
CP 2100	THICKENER - WB
CP 2200	BINDER - WB

ROTARY PRINTING

Cross Linkers

SP 201 COLD FIXING AGENT - WB

It should be used as activator with SP 237 Flock Adhesive - WB

TECHNICAL DATA

Appearance

Mixture

Yellowish Liquid

3 % in SP 237 Flock Adhesive

SP 203 FIXING AGENT - WB

To improve the washing fastness and to obtain anti-foil effect in discharge applications

TECHNICAL DATA

Appearance

Mixture

Clear Liquid

1-3 % in GS 635 Ecological Discharge Base and GS 645 Ecological Discharge White

AC 1001 COLD FIXING AGENT - WB

Cold fixing agent for AC Series

TECHNICAL DATA

Appearance

Mixture

Yellowish Liquid Mixture

0.5-1 % in AC Series

SP 202 COLD FIXING AGENT - WB

It can be used with water based products to improve washing fastness.

TECHNICAL DATA

Appearance

Mixture

Yellowish Liquid

1-3 %

SP 204 CROSSLINKER - WB

In case of any need, it can be added to water based products to improve washing and rubbing fastness

TECHNICAL DATA

Appearance

Mixture

White Liquid

1-3 %

AC 1004 CROSSLINKER - WB

Cross-linker that provides high fastness for AC Series products

TECHNICAL DATA

Appearance

Mixture

White Liquid

1-3 % in AC series

CROSS LINKERS & REGULATORS

Viscosity Reducers

SP 209 REGULATOR - WB

Viscosity reducer and drying retarder for XP and SP series products

TECHNICAL DATA

Appearance

Mixture

Clear Liquid

1-3 % in SP series

SP 232 REGULATOR - WB

Viscosity reducer and drying retarder for SP 230 Anti Migration Base - WB

TECHNICAL DATA

Appearance

Mixture

Yellowish Liquid

5-10 % in SP 230 Anti-Migration Base

PS 01 REGULATOR - WB

Viscosity reducer and drying retarder for PS series products and Sp 236 Foil Adhesive - WB

TECHNICAL DATA

Appearance

Mixture

Clear Liquid

1-3 % in PS series and SP 236

GS 600 REGULATOR - WB

Viscosity reducer and drying retarder for GS series products

TECHNICAL DATA

Appearance

Mixture

Clear Liquid

1-3 % in GS series(Except for GS 635 Ecological Discharge Base and GS 645 Ecological Discharge White.)

AC 1009 REGULATOR - WB

Viscosity reducer and drying retarder for AC series products

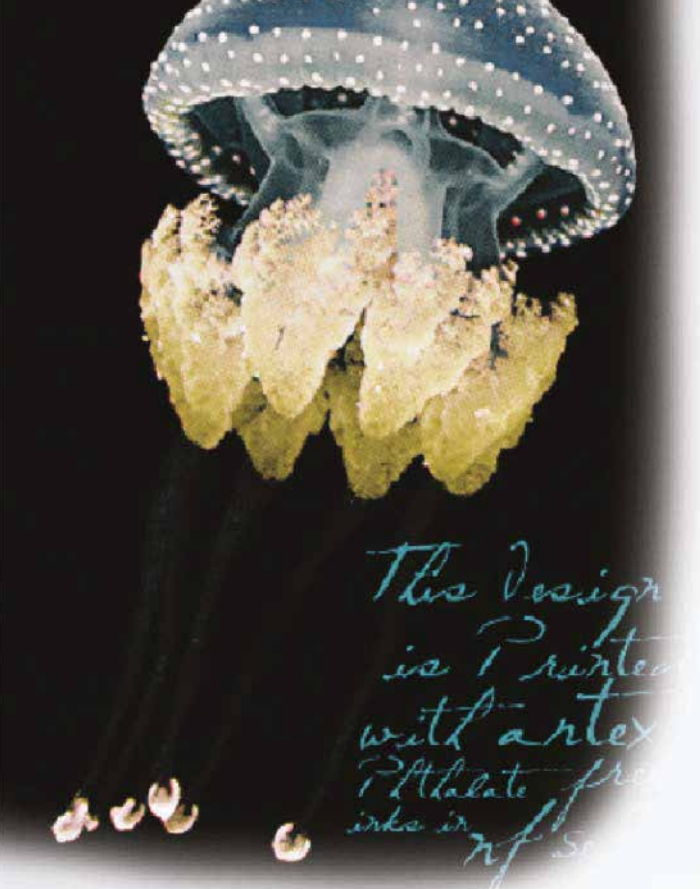
TECHNICAL DATA

Appearance

Mixture

Clear Liquid

1-3 % in AC series



NF 67 COTTON WHITE - PL

Elastic, soft touching and covering
plastisol white

TECHNICAL DATA

Apperance	White Paste
Type pf Fabric	100% Cotton
Screen	43 cm/110 inch Mesh 70 micron Silk-120 cm/305 inch Mesh 34 micron Silk
Squeegee	67-70 Shore V Type
Curing	160 °C/320 F - 1.5 minutes
Washing	60 °C/140 F - 1200 rpm - 5 Washes
Cleaning of Screen	Synthetic Thinner

NF 64 LOW BLEED WHITE - PL

Very opaque, creamy viscosity that works
on cotton and poly cotton blended
(up to 50-50%) fabrics.

TECHNICAL DATA

Apperance	White Paste
Type pf Fabric	Dark Colored Polyester - Cotton Blends up to 50-50%
Screen	43 cm/110 inch Mesh 70 micron Silk-77 cm/195 inch Mesh 48 micron Silk
Squeegee	67-70 Shore V Type
Curing	160 °C/320 F - 1.5 minutes
Washing	60 °C/140 F - 1200 rpm - 5 Washes
Cleaning of Screen	Synthetic Thinner

NF 65 SNOW WHITE - PL

Elastic, soft touching and high coverage
plastisol white

TECHNICAL DATA

Apperance	White Paste
Type pf Fabric	100% Cotton
Screen	43 cm/110 inch Mesh 70 micron Silk-120 cm/305 inch Mesh 34 micron Silk
Squeegee	67-70 Shore V Type
Curing	160 °C/320 F - 1.5 minutes
Washing	60 °C/140 F - 1200 rpm - 5 Washes
Cleaning of Screen	Synthetic Thinner

NF 66 WHITE - PL

Elastic, soft touching and covering
plastisol white

TECHNICAL DATA

Apperance	White Paste
Type pf Fabric	100% Cotton
Screen	43 cm/110 inch Mesh 70 micron Silk-120 cm/305 inch Mesh 34 micron Silk
Squeegee	67-70 Shore V Type
Curing	160 °C/320 F - 1.5 minutes
Washing	60 °C/140 F - 1200 rpm - 5 Washes
Cleaning of Screen	Synthetic Thinner

NF 10 HIGH DENSITY CLEAR BASE - PL

Transparent and sharp high density effect

TECHNICAL DATA

Apperance	Clear Base
pH	100% Cotton
Screen	27 cm/70 inch Mesh 80 micron Silk
Squeegee	67-70 Shore V Type
Curing	160 °C/320 F - 1.5 minutes
Washing	60 8C/140 F - 1200 rpm - 5 Washings
Cleaning of Screen	Synthetic Thinner

NF 12 HIGH DENSITY CLEAR BASE - PL

Sharp high density effect especially for
transfer printing

TECHNICAL DATA

Apperance	Clear Base
pH	100% Cotton
Screen	27 cm/70 inch Mesh 80 micron Silk
Squeegee	67-70 Shore V Type
Curing	160 °C/320 F - 1.5 minutes
Washing	60 °C/140 F - 1200 rpm - 5 Washings
Cleaning of Screen	Synthetic Thinner

NF 61 HIGH DENSITY CLEAR BASE - PL

Elastic and soft touching high density effect

TECHNICAL DATA

Apperance	Clear Base
pH	100% Cotton
Screen	27 cm/70 inch Mesh 80 micron Silk
Squeegee	67-70 Shore V Type
Curing	160 °C/320 F - 1.5 minutes
Washing	60 °C/140 F - 1200 rpm - 5 Washes
Cleaning of Screen	Synthetic Thinner

NF 60 CLEAR BASE - PL

Mixing Clear Base for glitter and gilding
effect

TECHNICAL DATA

Apperance	Clear Base
Type pf Fabric	100% Cotton
Screen	43 cm/110 inch Mesh 70 micron Silk-120 cm/305 inch Mesh 34 micron Silk
Squeegee	67-70 Shore V Type
Curing	160 °C/320 F - 1.5 minutes
Washing	60 °C/140 F - 1200 rpm - 5 Washes
Cleaning of Screen	Synthetic Thinner



PLASTISOL , SERIES



NF 63 ANTI MIGRATION BASE - PL

Used to prevent dye migration on dark colored polyester and cotton polyester blend fabrics

TECHNICAL DATA

Apperance	Grey Base
Type pf Fabric	Dark Colored 100% Polyester and Polyester - Cotton Blends
Screen	43 cm/110 inch Mesh 70 micron Silk
Squeegee	67-70 Shore V Type
Curing	160 °C/320 F - 1.5 minutes
Washing	60 °C/140 F - 1200 rpm - 5 Washes
Cleaning of Screen	Synthetic Thinner

NF 80 PUFF BASE - PL

Elastic and soft touching suede plastisol puff base

TECHNICAL DATA

Apperance	Clear Base
Type pf Fabric	100% Cotton
Screen	43 cm/110 inch Mesh 70 micron Silk
Squeegee	67-70 Shore V Type
Curing	160 °C/320 F - 1.5 minutes
Washing	60 °C/140 F - 1200 rpm - 5 Washes
Cleaning of Screen	Synthetic Thinner

NF 62 FLOCK ADHESIVE - PL

Excellent plastisol flock printings with high washing fastness

TECHNICAL DATA

Apperance	Clear Base
Type pf Fabric	Cotton / 100% Polyester and Polyester-Cotton Blends
Screen	43 cm/110 inch Mesh 70 micron Silk
Squeegee	67-70 Shore V Type
Curing	160 8C/320 F - 3 minutes
Washing	60 °C/140 F - 1200 rpm - 5 Washes
Cleaning of Screen	Synthetic Thinner

NF 55 REGULATOR - PL

Viscosity reducer for NF series products

TECHNICAL DATA

Apperance	Transparent Liquid
Density (g/cm³)	0.97
Mixture	1-3 % in NF series

NF 90 THICKENER - PL

Thickener for NF Series products

TECHNICAL DATA

Apperance	Clear Liquid
Mixture	0.5 - 2 % in NF series

NF 91 CROSSLINKER - PL

It should be used as activator with NF62 Flock Adhesive - WB

TECHNICAL DATA

Apperance	Yellow Liquid
Mixture	2-3 % in NF 62 Flock Adhesive

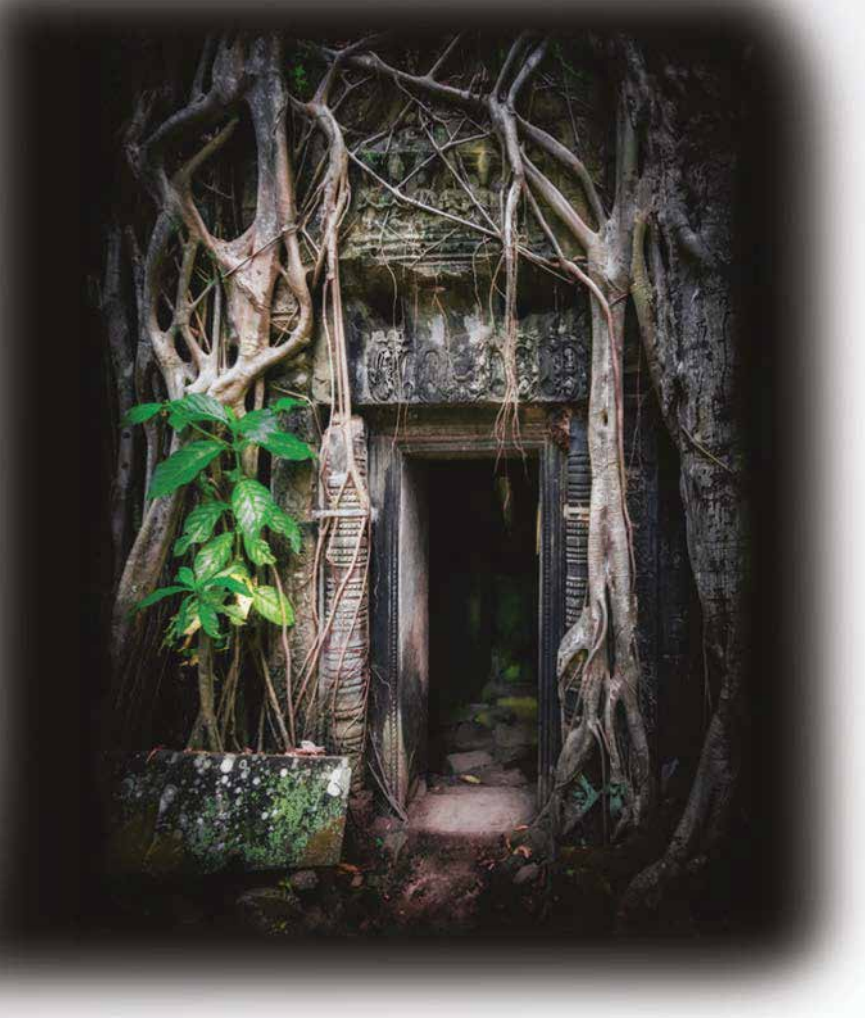
NF 95 MATT BASE - PL

Used to decrease glossy surface appearance of NF Series

TECHNICAL DATA

Apperance	Clear Base
Type pf Fabric	100%Cotton
Screen	43 cm/110 inch Mesh 70 micron Silk - 120 cm/305 inch Mesh 34 micron silk
Squeegee	67-70 Shore V Type
Curing	160 °C/320 F - 1.5 minutes
Washing	60 °C/140 F - 1200 rpm - 5 Washes
Cleaning of Screen	Synthetic Thinner

PLASTISOL SERIES



QF 4010 CLEAR BASE - PL

Elastic, soft touching clear base with quick curing

TECHNICAL DATA

Apperance	Clear Base
Type pf Fabric	100% Cotton
Screen	43 cm/110 inch Mesh 70 micron Silk - 120 cm/305 inch Mesh 34 micron Silk
Squeegee	67-70 Shore V Type
Curing	130 °C/266 F - 1 minute
Washing	60 °C/140 F - 1200 rpm - 5 Washes
Cleaning of Screen	Synthetic Thinner

QF 4020 WHITE - PL

Elastic, soft touching white with quick curing

TECHNICAL DATA

Apperance	White Paste
Type pf Fabric	100% Cotton
Screen	43 cm/110 inch Mesh 70 micron Silk - 120 cm/305 inch Mesh 34 micron Silk
Squeegee	67-70 Shore V Type
Curing	130 °C/266 F - 1 minute
Washing	60 °C/140 F - 1200 rpm - 5 Washes
Cleaning of Screen	Synthetic Thinner

NF SERIES COLOURS



NF CMYK COLOURS



NF FLUORESCENT COLOURS



QUICK FLASH SERIES COLOURS



QUICK FLASH PLASTISOLS

RFU PLASTISOL COLORS



COMMERCIAL PRODUCTS

TRANSFOIL
 GLITTER POWDER
 GILDING POWDER
 TRANSFER PAPER
 TRANSFER POWDER
 SPRAY ADHESIVE
 EMULSION
 CAVIAR BEAD
 REFLECTIVE PIGMENT
 PHOSPHORUS

AUXILIARY MATERIALS



CERTIFICATES



anadolukimya

www.anadolukimya.com

Akçaburgaz District 3105. Street No:8-12 / 1,
34522 Esenyurt - Istanbul / Turkey
Tel: +90 212 875 77 50 - 3 Lines
Fax: +90 212 875 08 22



Basımı Yapan İşletme:
KUZEY REKLAM VE MATBAA HİZMETLERİ
Hakan ÖZKAYA
Tekstilent Ticaret Merkezi Oruçreis Mah.
Tekstilent Caddesi B3 Blok No: 93
Esenler / İstanbul Tel: 02124386518
Basım Tarihi: 20 Nisan 2018